

# PRICE LIST Catalog 2026



## 1969 - 2026 CONTINUITY IN QUALITY



Quality in terms of our products and service has always been central to our concerns. It is our hallmark. Every day, we strive to offer you innovative products directly in keeping with this longstanding commitment to quality.

We have forged our expertise around the overflow prevention device, we are specialists in this regard and it is this original know-how that we are continuing to harness for the benefit of all our customers, installers and users alike.

In 2026, we have a range of ever safer products available to guarantee flawless quality every time.

As you browse through this catalogue, alongside our brand's flagship products you'll also find newcomers:

- The new SmartBox AIR Wi-Fi battery-operated electronic remote level gauge, allowing you to monitor the filling level of your tanks anytime and from anywhere in the world – easily via an app.
- The new universal float level gauges Mano-Clock Multi, in high quality UV-resistant plastic (ASA/SAN) suitable for outdoor tanks.
- A new range of float level gauges and hand pumps suitable for 60L jerrycans & 220L oil drums.

Our team of technicians and sales reps is on hand to provide you with a prompt service. You can count on it.

Looking forward to working with you soon !

### CONDITIONS OF CARRIAGE 2026



#### STANDARD Delivery In mainland France

| Amount ex-VAT of the order | 1 to 55 € | 56 to 350 € | > 350 €      |
|----------------------------|-----------|-------------|--------------|
| Packing and carriage       | 26 €      | 24 €        | Free carrier |



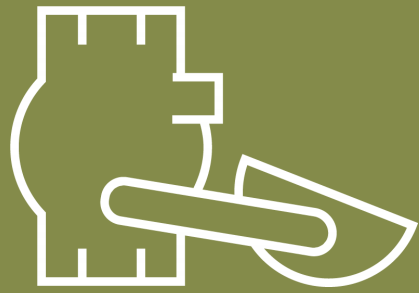
#### EXPRESS Delivery In mainland France

| Amount ex-VAT of the order | Regardless of the amount |
|----------------------------|--------------------------|
| Packing and carriage       | 45€<br>(Code 900 070)    |

\* Express deliveries are only possible for non-palletized shipments in mainland France only.



# OVERFILL PREVENTION DEVICE



OVERFILL PREVENTION DEVICES ATEX .....6 - 8

OVERFILL PREVENTION DEVICES  
FOR FUEL, DIESEL, ADBLUE® ..... 6 - 10

ELECTRONIC OVERFILL PROTECTOR .....11



## SIZE CORRESPONDENCE

| DN (mm) | Inch (") | Ø (mm)  |
|---------|----------|---------|
| DN8     | 1/4"     | 8/13    |
| DN10    | 3/8"     | 12/17   |
| DN15    | 1/2"     | 15/21   |
| DN20    | 3/4"     | 20/27   |
| DN25    | 1"       | 26/34   |
| DN32    | 1"1/4    | 33/42   |
| DN40    | 1"1/2    | 40/49   |
| DN50    | 2"       | 50/60   |
| DN65    | 2"1/2    | 66/76   |
| DN80    | 3"       | 80/90   |
| DN100   | 4"       | 102/114 |

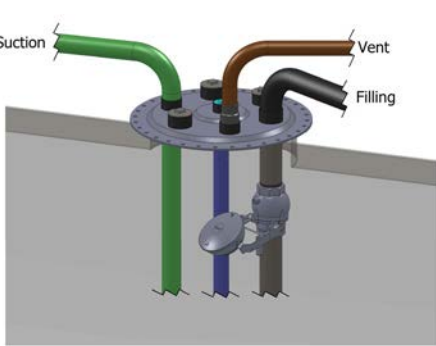


For all products marked with Datasheet Available, please  
visit our website [www.selfclimat.com](http://www.selfclimat.com) or contact us

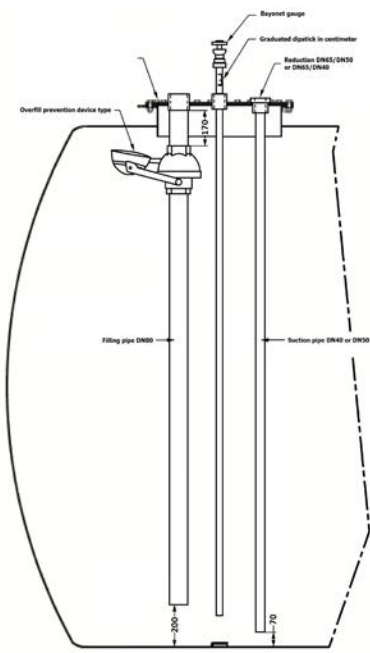




# Overfill prevention devices for petroleum fuels and chemical industry



- A completely safe mechanical safety and environmental protection device preventing any risk of overflow when filling a static tank.
- Fits on the filling tube inside the tank.



The operating principle is based on closing by hydraulic pressure applied inside the filling body : the progressive rise of the float – under the effect of filling – drives a piston that progressively closes the liquid passage and increase the hydraulic pressure to trigger the closing level.

## Compliance with the following standards and directives in force



- European NF EN 13616-1 : 2016 standard
- ATEX : suitable for use in zone 0, in compliance with Directive 2014/34/EU
- Ex II 1 G
- Ex h IIB T6 Ga
- North-American ANSI/CAN/UL/ULC 2583:2021 Standard of Safety (applicable since May 1st, 2025)\*
- Dutch KIWA BRL-K636/03 standard \*
- Order of 18/04/2008 relating to underground tanks containing flammable liquids and their annex equipment
- Order of 01/07/2004 fixing the technical and safety regulations applicable to the storage of petroleum products.

\* **Warning ! The item reference differs depending on the country of destination. Please contact us.**



### Scope of delivery

- Overfill prevention device
- Aluminum identification plate
- Operating instructions
- Declaration EU of conformity



### Options

- A cable tester to check the OPD's correct operation once fitted inside the tank
- A holder clip to fit the OPD's identification plate



### Advantages

- Fully metallic (no seals) construction for a better durability
- Free-maintenance, non-corrodible material
- Ready-to-fit : no adjustment required
- Ensures a complete and automatic closure
- Possibility of re-opening and draining the delivery pipe upstream
- Each unit tested in production



### Compatibility

- With a great variety of liquids thanks to noncorrodible material
- Before installing, you must check the compatibility between the OPD and the liquid stored in the tank. Compatibility opinions given by Self Climat are for information only and can in no circumstances be used contractually.



# Self Climat Overfill prevention device



- Completely safe mechanical safety and environmental protection device preventing any risk of overflow when filling a static tank
- High reliability and durability of operation
- High material resistance
- All-metal product (no seal, no gasket, no maintenance)
- Suitable for gravity or pressure filling operation
- Operational test on every unit

## TECHNICAL SPECIFICATIONS

|                                   | DN50               | DN80               | DN100              |
|-----------------------------------|--------------------|--------------------|--------------------|
| Connection thread inlet/outlet    | G2" BSP F/F        | G3" BSP F/F        | G4" BSP F/F        |
| Min. filling pressure             | 0,15 bar           | 0,15 bar           | 0,15 bar           |
| Max. filling pressure             | 6 bar              | 8 bar              | 8 bar              |
| Min. filling flow                 | 1,4 m³/h           | 3,6 m³/h           | 5,6 m³/h           |
| Max. filling flow (NF EN 13616-1) | 21 m³/h            | 54 m³/h            | 84 m³/h            |
| Max. filling flow (factory test)  | 40 m³/h            | 60 m³/h            | 84 m³/h            |
| Max. viscosity                    | 55 cSt (*)         | 55 cSt (*)         | 55 cSt (*)         |
| Working temperature               | - 25 °C to + 60 °C | - 25 °C to + 60 °C | - 25 °C to + 60 °C |
| Type of filling                   | Pump or gravity    | Pump or gravity    | Pump or gravity    |

(\*) Equivalence of units : 1 cSt = 1 mm²/s = 1 mPa/s



# OPD N type for petroleum fuels 2", 3" and 4" BSP



- Excellent resistance to automobile fuels (heating oil, diesel fuel, gasoline, lead-free and leaded gasoline).
- Aluminum body and galvanized steel float

|                      | Max. filling flow (NF EN 13616-1) | Max. filling flow (factory test) | Weight kg | Part no. | €       |
|----------------------|-----------------------------------|----------------------------------|-----------|----------|---------|
| OPD DN50 Type 200 N  | 21 m³/h                           | 40 m³/h                          | 3,40      | 308 278  | 631,00  |
| OPD DN80 Type 323 N  | 54 m³/h                           | 60 m³/h                          | 5,90      | 308 276  | 852,00  |
| OPD DN100 Type 423 N | 84 m³/h                           | 84 m³/h                          | 6,10      | 308 274  | 1026,00 |







OPD NT type for the chemical industry 2”, 3”and 4” BSP

- Excellent resistance to chemical liquids, aviation fuels, biofuels, other petroleum fuels, additives, oils, alcohols...
- Anodised aluminum body, 316 L stainless steel float

|                       | Max. filling flow<br>(NF EN 13616-1) | Max. filling flow<br>(factory test) | Weight kg | Part no. | €       |
|-----------------------|--------------------------------------|-------------------------------------|-----------|----------|---------|
| OPD DN50 Type 200 NT  | 21 m³/h                              | 40 m³/h                             | 2,50      | 308 279  | 862,00  |
| OPD DN80 Type 323 NT  | 54 m³/h                              | 60 m³/h                             | 5,10      | 308 277  | 1184,00 |
| OPD DN100 Type 423 NT | 84 m³/h                              | 84 m³/h                             | 5,50      | 308 273  | 1367,00 |



AdBlue®

OPD stainless steel (100% SS) 3” BSP

- Excellent resistance to corrosive liquids or containing water (e.g. AdBlue®).
- 316 stainless steel body, 316 L stainless steel float

|               | Max. filling flow<br>(NF EN 13616-1) | Max. filling flow<br>(factory test) | Weight kg | Part no. | €        |
|---------------|--------------------------------------|-------------------------------------|-----------|----------|----------|
| OPD DN80 INOX | 54 m³/h                              | 60 m³/h                             | 10,60     | 308 268  | 5 646,00 |



OPTIONAL ACCESSORIES

OPD identification plate

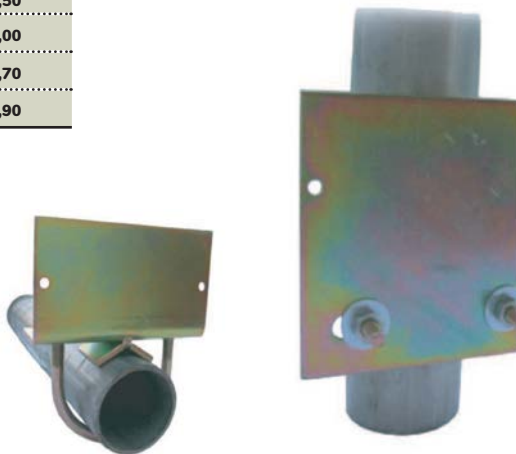
- Double-sided aluminum plate (FR / EN) to be fitted near the filling point
- The use and the replacement of this plate are exclusively subject to the installer's responsibility
- It is important that the plate has information related to the OPD in place

|                                     | Weight kg | Part no. | €     |
|-------------------------------------|-----------|----------|-------|
| Identification plate OPD DN 50      | 0,03      | 308 241  | 14,50 |
| Identification plate OPD DN 80      | 0,03      | 308 240  | 14,50 |
| Identification plate OPD DN 100     | 0,03      | 308 250  | 21,90 |
| Identification plate OPD DN 50 NT   | 0,03      | 308 246  | 21,90 |
| Identification plate OPD DN 80 NT   | 0,03      | 308 245  | 21,90 |
| Identification plate OPD DN 100 NT  | 0,03      | 308 251  | 21,90 |
| Identification plate OPD DN 80 INOX | 0,03      | 308 252  | 21,90 |

Holder clip for OPD identification plate

- Pre-drilled clip to fit on the filling tube or manhole plate

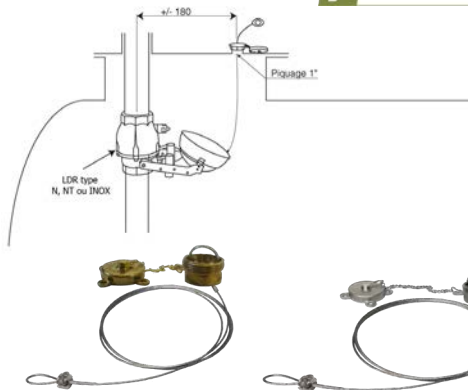
|                                | Weight kg | Part no. | €     |
|--------------------------------|-----------|----------|-------|
| Parrallel holder clip DN50     | 0,35      | 308 242  | 18,50 |
| Parrallel holder clip DN80     | 0,50      | 308 243  | 22,00 |
| Bracket holder clip DN40-DN50  | 0,35      | 308 244  | 17,70 |
| Bracket holder clip DN80-DN100 | 0,60      | 308 247  | 19,90 |



OPD cable tester

- A test cable for checking the correct operation of the OPD once installed inside the tank by testing the free movement of the float to fit on OPD's float N, NT, INOX (SS)
- Stainless steel cable, length 2 m, Ø 1 mm, with pulling ring and cable clamp
- Female zamak fitting Rp 1”F × G 1” 1/4M, supplied with zamak cap and brass chain (ref. 308 267)
- Female stainless steel fitting Rp 1”F × G 1” 1/4M, supplied with stainlesssteel cap(CF8M 316), NBR gasket and stainless steel chain (304) (ref. 308 265)

|                                  | Weight kg | Part no. | €     |
|----------------------------------|-----------|----------|-------|
| OPD cable tester                 | 1,00      | 308 267  | 36,70 |
| OPD stainless steel cable tester | 1,00      | 308 265  | 55,40 |





OTHER OVERFILL SYSTEM SOLUTIONS



OPD cable tester  
OPD inox cable tester

- Non-ATEX safety and environmental protection device preventing any risk of overflow when tank is full, intended for use in private storage tanks containing heating oil, diesel fuel or kerosene not subject to declaration to classified bodies (ICPE)
- Installation and maintenance by simple fitting within a 2" BSP pipe

| TECHNICAL SPECIFICATIONS              |                                  |          |        |
|---------------------------------------|----------------------------------|----------|--------|
| Connection thread                     | G2" M (DN 50)                    |          |        |
| Material                              | Aluminum, anodised aluminum 6026 |          |        |
| Min. filling pressure                 | 0,15 bar                         |          |        |
| Max. filling pressure                 | 7 bar (100 psi)                  |          |        |
| Min. filling flow                     | 3,0 m3/h (50 l/min)              |          |        |
| Max. filling flow                     | 34,8 m3/h (580 l/min)            |          |        |
| Type of filling                       | Pump or gravity                  |          |        |
|                                       |                                  |          |        |
|                                       | Weight kg                        | Part no. | €      |
| Overfill prevention device FILSTOP 2" | 0,70                             | 308 132  | 172,60 |



Overfill prevention device  
CLEANFILL 2"  
CLEANFILL 2" biodiesel (B100 , HVO100)  
CLEANFILL 2" AdBlue®

- Non-ATEX safety and environmental protection device preventing any risk of over-flow when the tank is full
- Intended for use in static storage tanks containing heating oil, non-road diesel (NDR), diesel fuel, biodiesel (B100, HVO100) and AdBlue® (depending on model)
- Installation and maintenance by simple fitting within a 2" BSP pipe
- European EN 13616-1 : 2016 and Dutch KIWA BRL-K636/03 standards compliant

| TECHNICAL SPECIFICATIONS                          |  |          |        |
|---|--|----------|--------|
| Connection thread                                 | G2" M (DN50)   |          |        |
| Material  | CLEANFILL 2" : High resistance anodized aluminum body, polyurethan float<br>CLEANFILL 2" biodiesel : High resistance anodized aluminum body, HDPE float<br>CLEANFILL 2" AdBlue® : Stainless steel body, HDPE float |          |        |
| Min. filling pressure                             | 0,15 bar   |          |        |
| Max. filling pressure                             | 7 bar (100 psi)  |          |        |
| Min. filling flow                                 | 2,4 m³/h (40 l/min)  |          |        |
| Max. filling flow                                 | 40 m³/h (650 l/min)  |          |        |
| Type of filling                                   | Pump or gravity  |          |        |
|   |  |          |        |
|   | Weight kg  | Part no. | €      |
| Overfill prevention device CLEANFILL 2"           | 0,70   | 308 130  | 303,20 |
| Overfill prevention device CLEANFILL 2" Biodiesel | 0,80   | 308 133  | 313,60 |
| Overfill prevention device CLEANFILL 2" AdBlue®   | 1,60   | 308 131  | 896,00 |



Overfill protector BC-2

- Non-ATEX safety equipment intended for use in storage tanks by triggering a preventive visible/audible alarm when the liquid gets in contact with the probe fitted inside the tank
- Two relays output (by changeover contact) for additional alarm
- One « test button » to control the correct operation

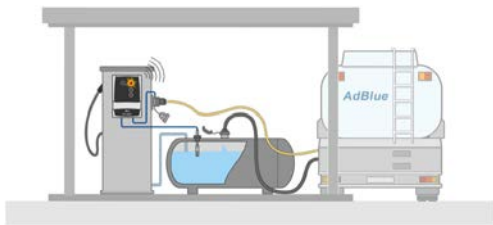
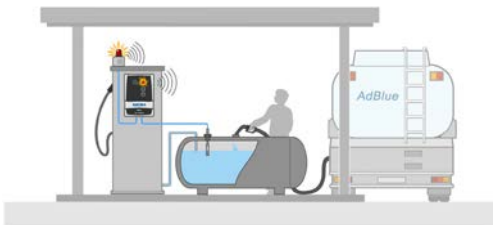
| TECHNICAL SPECIFICATIONS |   |
|--------------------------|---|
| Connection thread        | G1" M (DN25)  |
| Medium                   | Diesel fuel, FAME, fuel oil, bio fuel oil, water or oil-water mixtures (+1 °C to +70 °C), industrial oil, vegetable oil, waste oil, Urea solution ( AdBlue®), liquid fertiliser (AHL, ASL, HAS) JGS (liquid manure, semi-liquid manure, silage effluent)... |
| Power supply             | 230 V AC ; 50 - 60 Hz   |
| Dimensions BC-2 (IP54)   | 194 × 130 × 65 mm (H × W × D)   |
| Degree of protection     | IP54 (indoor or outdoor, protected against the weather)   |
| Number of relay contact  | 2   |
| Medium temperature range | -20 / +60 °C  |
| Probe length             | 250 mm, 360 mm, 500 mm, 700 mm  |
| Probe diameter           | 10 mm   |
| Probe material           | stainless steel   |
| Probe cable length       | 4,7 m (max. 100 m) 2 × 1 mm²  |

|  | Weight kg | Part no. | €      |
|--|-----------|----------|--------|
| Overfill protector BC-2 IP54 (probe 250 mm with 4,7 m cable) | 1,50      | 308 393  | 538,00 |

| SPARE PARTS                   |           |          |        |
|-------------------------------|-----------|----------|--------|
|                               | Weight kg | Part no. | €      |
| Control unit BC-2 IP54        | 0,98      | 308 394  | 378,50 |
| Probe 250 mm with 4,7 m cable | 0,50      | 308 395  | 197,50 |
| Probe 360 mm with 4,6 m cable | 0,50      | 308 390  | 215,50 |
| Probe 500 mm with 4,5 m cable | 1,00      | 308 391  | 222,60 |
| Probe 700 mm with 4,3 m cable | 1,00      | 308 392  | 235,30 |



IP 54







# LEAK DETECTOR



LEAK DETECTOR  
FOR DOUBLE-WALLED TANK ..... 14

LEAK DETECTION FLUID ..... 14

LEAK DETECTOR  
FOR RETENTION BASINS ..... 15



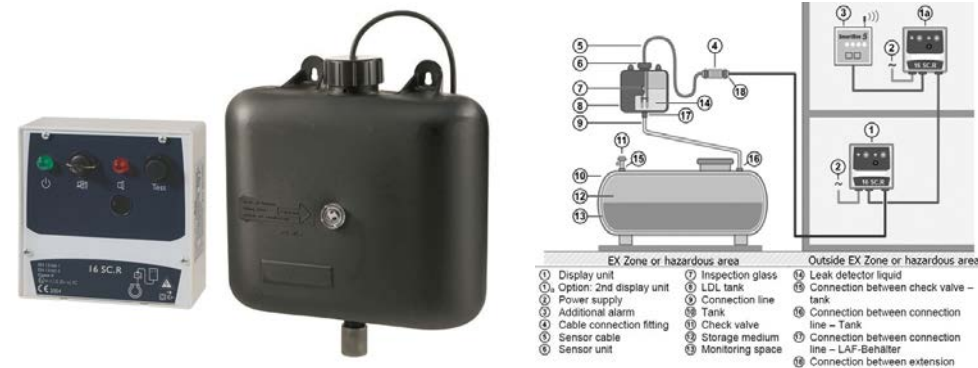
## SIZE CORRESPONDENCE

| DN (mm) | INCH (") | Ø (mm)  |
|---------|----------|---------|
| DN8     | 1/4"     | 8/13    |
| DN10    | 3/8"     | 12/17   |
| DN15    | 1/2"     | 15/21   |
| DN20    | 3/4"     | 20/27   |
| DN25    | 1"       | 26/34   |
| DN32    | 1 1/4"   | 33/42   |
| DN40    | 1 1/2"   | 40/49   |
| DN50    | 2"       | 50/60   |
| DN65    | 2 1/2"   | 66/76   |
| DN80    | 3"       | 80/90   |
| DN100   | 4"       | 102/114 |





Leak detector Fuitalarme  
16 SC.R for double-walled tanks



- For double-walled tanks with antifreeze liquid in the interstitial space
- For monitoring flammable and non-flammable water-polluting liquids in aboveground and underground storage tanks
- The LAF container can be installed in hazardous areas zones I and II (e.g. manhole of petrol tanks)
- The control unit 16 SC.R must be installed outside hazardous area (not permitted in EX protection zone)
- Control unit with operating and alarm indicators, audible/visual alarm, test/acknowledge buttons and relay output for connecting an additional external alarm equipment.

TECHNICAL SPECIFICATIONS

|                             |  |
|-----------------------------|--|
| Power supply                | 230 V AC; 50-60 Hz   |
| Operating temperature range | Max. 50 °C   |
| Housing                     | 120 × 120 × 50 mm  |
| Protection                  | IP20   |
| LAF usable contents         | 4,5 l for max. 450 l in the interstitial space   |
| Cable probe                 | 0,4 m (max. 100 m) 2 × 1,5 mm <sup>2</sup>   |
| Approval                    | Classe II<br>NF EN 13 160-1<br>NF EN 13 160-3  |
| Directive                   | CE marking according to ATEX regulation 2014/34/UE   |
| ATEX marking                | ATEX II (1) G [Ex ia] IIC (control unit 16 SC.R)<br>ATEX II 1 G Ex ia IIC Ga (LAF container) |

|  | Weight kg | Part no. | €      |
|--|-----------|----------|--------|
| Fuitalarme 16 SC.R (with relay), incl. container and probe           | 2,15      | 308 361  | 199,70 |
| Fuitalarme 16 SC.R (with relay), incl. container and probe + KIT N°1 | 2,10      | 308 372  | 214,20 |
| Fuitalarme 16 SC.R (with relay), incl. container and probe + KIT N°2 | 2,20      | 308 370  | 219,60 |

ACCESSORIES AND SPARE PARTS

|  | Weight kg | Part no. | €      |
|--|-----------|----------|--------|
| Control unit 16 SC.R (with relay)                    | 0,45      | 308 366  | 160,10 |
| LAF container without probe (Ex)                     | 0,94      | 308 362  | 85,30  |
| Probe (Ex)   | 0,20      | 308 369  | 32,70  |
| LAF mounting kit N°1                                 | 0,35      | 308 363  | 16,30  |
| LAF mounting kit N°2                                 | 0,35      | 308 364  | 20,40  |
| Bulbs in set of 5 (green)                            | 0,10      | 308 367  | 16,40  |
| Bulbs in set of 5 (red)                              | 0,10      | 308 368  | 16,40  |
| Junction fitting IP54 (included in KIT N°2)          | 0,05      | 308 375  | 10,00  |
| A 10 L container with leak detection fluid at -30 °C | 10,70     | 308 376  | 53,00  |



Scope of delivery

- Control unit 16 SC.R with relay
- LAF container
- Probe with 0,5 m cable



Mounting kit (option)

- 1,5 m plastic hose
- 2 hose nozzles G ¾ M
- 2 screw-thread clamps
- A batch of screws + wallplugs
- A sealing kit IP54 (included in the mounting kit N°2)



Leak detection fluid (option)

- A 10 L container with leak detection fluid « Progel DP Sanitaire » ready-to-use, temperature up to -30 °C
- Drums 215 L and containers 1000 L (available on request)



Leak alarm unit LWG 2000  
for storage rooms, manholes, storage tanks,  
retention basins, drip pans



- For visual and audible alarms if liquids with a flash point of ≥ 55 °C are detected
- The control unit LWG 2000 must be installed outside hazardous area (not permitted in EX protection zone)
- Control unit with operating and alarm indicators, audible/visual alarm, test/acknowledge buttons and relay output for connecting an additional external alarm equipment.

TECHNICAL SPECIFICATIONS

|                             |  |
|-----------------------------|--|
| Medium                      | Water, urea solution (AdBlue®), fuel oil, heavy heating oil, diesel fuel, bio fuel oil, FAME, new oils, waste oil, oil-water mixtures, industrial oil, vegetable oil, liquid fertiliser (AHL, ASL, HAS)... |
| Probe mounting              | Storage tanks, containment basins, floors, manholes, pipes etc.  |
| Power supply                | 230 V AC; 50-60 Hz   |
| Operating temperature range | Max. 60 °C   |
| Housing                     | W × H × D: 120 × 120 × 50 mm   |
| Degree of protection        | IP30   |
| Probe material              | Stainless steel 1.4301   |
| Cable length                | 2 m or 5 m (max. 100 m) 2 × 1,5 mm <sup>2</sup>  |
| Approval                    | Class III<br>NF EN 13 160-1<br>NF EN 13 160-4  |

|   | Weight kg | Part no. | €      |
|---|-----------|----------|--------|
| Leak alarm unit LWG 2000 (probe with 2 m cable) | 0,53      | 308 380  | 297,70 |
| Leak alarm unit LWG 2000 (probe with 5 m cable) | 0,70      | 308 384  | 347,60 |

ACCESSORIES AND SPARE PARTS

|                       | Weight kg | Part no. | €      |
|-----------------------|-----------|----------|--------|
| Control unit LWG 2000 | 0,44      | 308 381  | 219,00 |
| Probe with 2 m cable  | 0,10      | 308 382  | 131,00 |
| Probe with 5 m cable  | 0,20      | 308 385  | 139,60 |
| Probe with 20 m cable | 0,95      | 308 387  | 228,10 |
| Mounting kit          | 0,03      | 308 383  | 5,30   |
| Junction fitting IP54 | 0,04      | 308 375  | 10,00  |

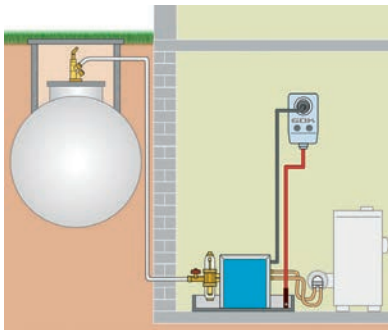
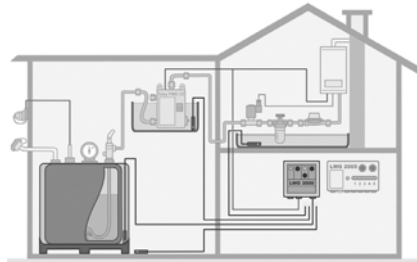
Leak protection system AS-2

- Automatic shutoff of electrical equipment connected to the socket (e.g. pump or burner) and visual/audible alarm when liquid is detected by the probe.

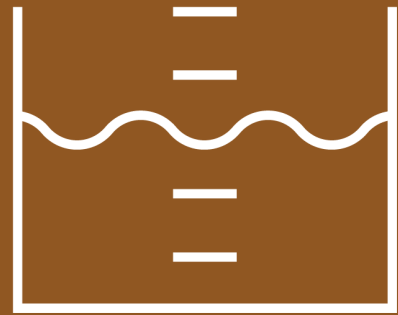
TECHNICAL SPECIFICATIONS

|                             |   |
|-----------------------------|---|
| Medium                      | Water, fuel oil, diesel fuel, new oil, waste oil, oil-water mixtures. |
| Probe mounting              | Retention basins, burner retention, pipes...                          |
| Power supply                | 230 V AC; 50 - 60 Hz  |
| Switched power              | max. 1800 VA  |
| Switched voltage            | 250 V AC / 8 A  |
| Sound level of buzzer       | approx. 70 dB(A)  |
| Operating temperature range | -20 °C to +60 °C  |
| Housing                     | W × H × D: 121 × 66 × 56 mm   |
| Degree of protection        | IP20  |
| Probe material              | CuZn / V2A  |

|                             | Weight kg | Part no.. | €      |
|-----------------------------|-----------|-----------|--------|
| Leak protection system AS-2 | 0,48      | 308 075   | 264,20 |







# LEVEL CONTROL



ELECTRONIC LEVEL GAUGE  
SMARTBOX® 1 / 2 / 3 / 4 / 4 PRO .....18 - 21

SMARTBOX AIR WI-FI BATTERY-OPERATED LEVEL  
GAUGE .....22 - 23

ELECTRO-MECHANICAL LEVEL GAUGE  
SMARTBOX® MINI .....24

ELECTRO-MECHANICAL LEVEL GAUGE  
SMARTBOX® FSA-W .....25

MECHANICAL FLOAT LEVEL GAUGE.....26 - 27

PNEUMATIC LEVEL GAUGE.....27 - 28

SECURE LEVEL & BUND ALARMS.....29 - 31



## SIZE CORRESPONDENCE

| DN (mm) | Inch (") | Ø (mm)   |
|---------|----------|----------|
| DN8     | 1/4"     | 8 /13    |
| DN10    | 3/8"     | 12 /17   |
| DN15    | 1/2"     | 15 /21   |
| DN20    | 3/4"     | 20 /27   |
| DN25    | 1"       | 26 /34   |
| DN32    | 1"1/4    | 33 /42   |
| DN40    | 1"1/2    | 40 /49   |
| DN50    | 2"       | 50 /60   |
| DN65    | 2"1/2    | 66 /76   |
| DN80    | 3"       | 80 /90   |
| DN100   | 4"       | 102 /114 |



For all products marked with "Datasheet Available",  
please visit our website [www.selfclimat.com](http://www.selfclimat.com) or contact us





Electronic level gauge  
SmartBox® 1, 2, 3, 4, 4 Pro



As options



Module DTM



Moisture proof junction box IP66 with pressure relief port

- Universal, hydrostatic level indicator consisting of a control unit with digital display and a submersible probe with integrated measuring cell
- Continuous level measurement on the digital display unit (L or cm, equivalence in %)

TECHNICAL SPECIFICATIONS

| Submersible probe 0/250 mbar                 |   |
|--|---|
| Medium                                       | Clean liquids such as fuel oil, biofuel, diesel, biodiesel, FAME, new oils, rainwater, AdBlue® etc. |
| Measuring range                              | - Probe 0/250 mbar Max. height (water = 2,50 m, heating oil = 2,90 m)                               |
|  | - Probe 0/500 mbar Max. height (water = 5 m, heating oil = 5,80 m)                                  |
|  | - Probe 0/1000 mbar Max. height (water = 10 m, heating oil = 11,60 m)                               |
| Measuring accuracy                           | ± 1 %   |
| Operating temperature range                  | - 10 °C to +50 °C   |
| Connection thread                            | G1" x 1" 1/2 x 2" M   |
| Connection cable                             | 6 m (max. 200 m) cable extension, min. section 2 x 0,40 mm²   |
| Dimensions                                   | Ø probe : 22 mm<br>without cable : 90 mm  |
| Degree of protection                         | IP68  |
| Control unit SmartBox® 1, 2, 3, 4            |   |
| User language                                | French, English, German   |
| Power supply                                 | 230 V AC 50 Hz  |
| Degree of protection                         | - IP30 (indoor)   |
|  | - IP54 (indoor or outdoor against the weather)  |
| Analogue output signal (optional DTM module) | 4-20 mA, 0-5 V, M-Bus   |



Scope of delivery

- Control unit SmartBox® 1, 2, 4 or 4
- Submersible probe 0/250 mbar with 6 m cable, measuring accuracy 1,0 %
- Adapters G1" x 1" 1/2 x 2" M
- Cable gland



Advantages

- Suitable for all tank shapes
- High reliability and measuring accuracy
- Easy, simple and quick installation
- Digital display in L, cm and equivalence in %
- Remote measurement (up to 200 m by cable extension)
- Alarm, relay contact, SMS (depending on model)

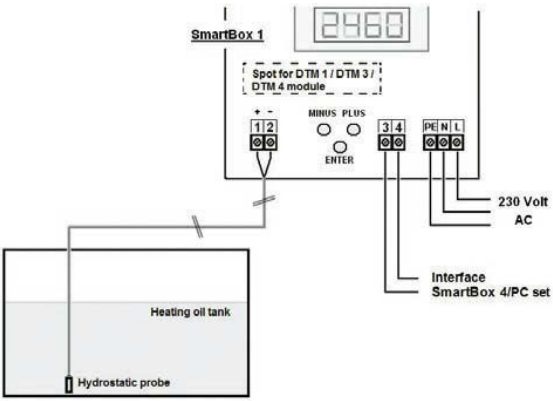
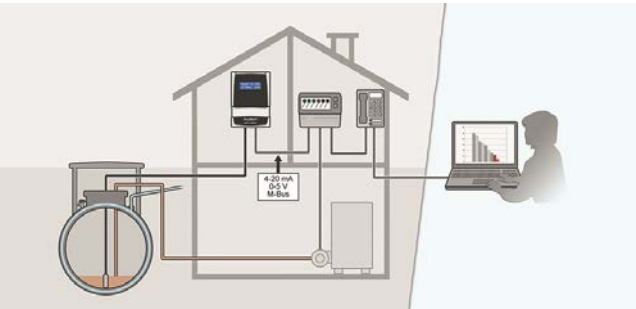


Options

- Analogue output 0-5 V, 4-20 mA, M-Bus via DTM module
- Moisture proof junction box IP66 with pressure relief port for protection of probe cable extension
- Other submersible probes available (ATEX, 0/500 mbar, 0/1 000 mbar...)

|                             | Level reading | Interface management | Relay contact | Visual audible alarm | Event signaling | Data transmission |
|-----------------------------|---------------|----------------------|---------------|----------------------|-----------------|-------------------|
| SmartBox® 1 IP30 / IP54     | ●             | ●                    | 0             |                      |                 |                   |
| SmartBox® 2 IP30 / IP54     | ●             | ●                    | 2             |                      |                 |                   |
| SmartBox® 3 IP30            | ●             | ●                    | 1             | ●                    |                 |                   |
| SmartBox® 4 GSM IP30 / IP54 | ●             | ●                    | 1             |                      | ●               | ●                 |
| SmartBox® 4 Pro GSM IP54    | ●             | ●                    | 0             |                      | ●               | ●                 |

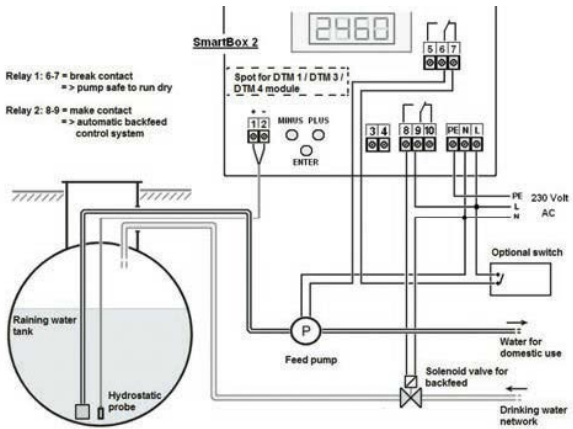
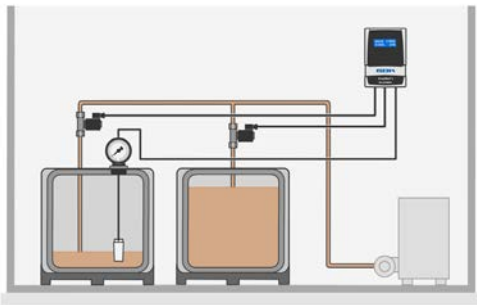
SmartBox® 1



|   | Weight kg | Part no. | €        |
|---|-----------|----------|----------|
| SmartBox® 1 IP30 (submersible probe 0/250 mbar with 6 m cable, measuring accuracy 1,0%) | 1,48      | 308 064  | 1 109,00 |
| SmartBox® 1 IP54 (submersible probe 0/250 mbar with 6 m cable, measuring accuracy 1,0%) | 1,60      | 308 044  | 1 204,00 |

SmartBox® 2

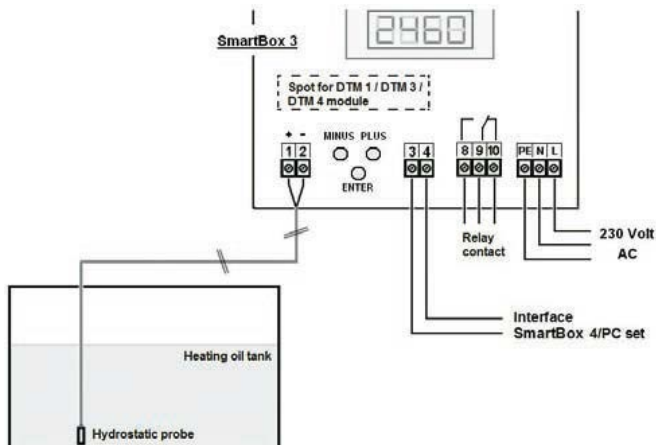
(two relay contacts with NO and NC)



|   | Weight kg | Part no. | €        |
|---|-----------|----------|----------|
| SmartBox® 2 IP30 (submersible probe 0/250 mbar with 6 m cable, measuring accuracy 1,0%) | 1,49      | 308 066  | 1 288,00 |
| SmartBox® 2 IP54 (submersible probe 0/250 mbar with 6 m cable, measuring accuracy 1,0%) | 1,65      | 308 046  | 1 392,00 |

SmartBox® 3

(one relay contact + one visual / audible alarm)

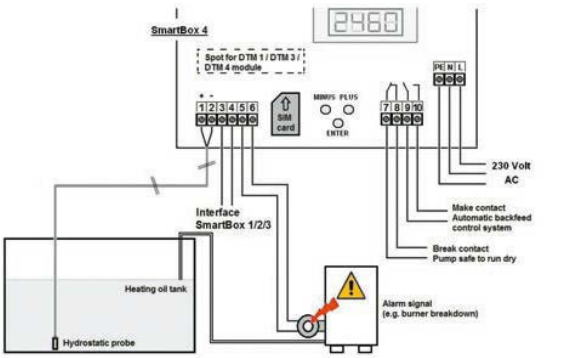
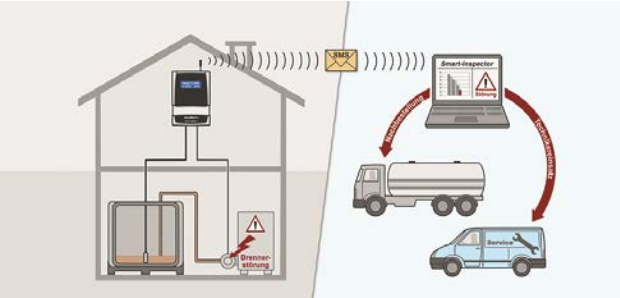


|   | Weight kg | Part no. | €        |
|---|-----------|----------|----------|
| SmartBox® 3 IP30 (submersible probe 0/250 mbar with 6 m cable, measuring accuracy 1,0%) | 1,50      | 308 065  | 1 346,00 |



SmartBox® 4 GSM

(one relay contact, SIM card not included)

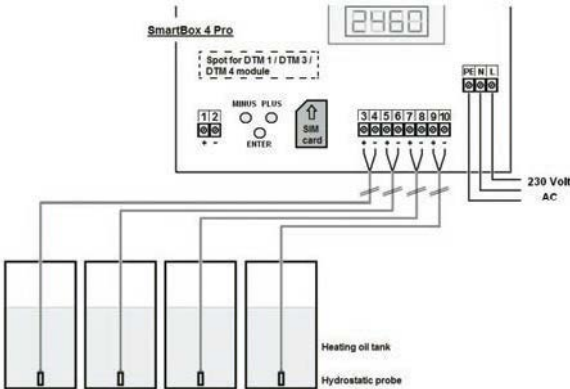
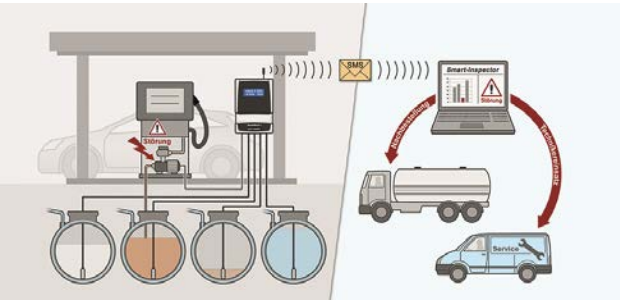


|   | Weight kg | Part no. | €        |
|---|-----------|----------|----------|
| SmartBox® 4 GSM IP30 (submersible probe 0/250 mbar with 6 m cable, measuring accuracy 1,0%) | 1,72      | 308 063  | 2 009,00 |
| SmartBox® 4 GSM IP54 (submersible probe 0/250 mbar with 6 m cable, measuring accuracy 1,0%) | 1,90      | 308 043  | 2 280,00 |

Coffret SmartBox® 4 Pro GSM

(can be connected to 4 tanks, SIM card not included)

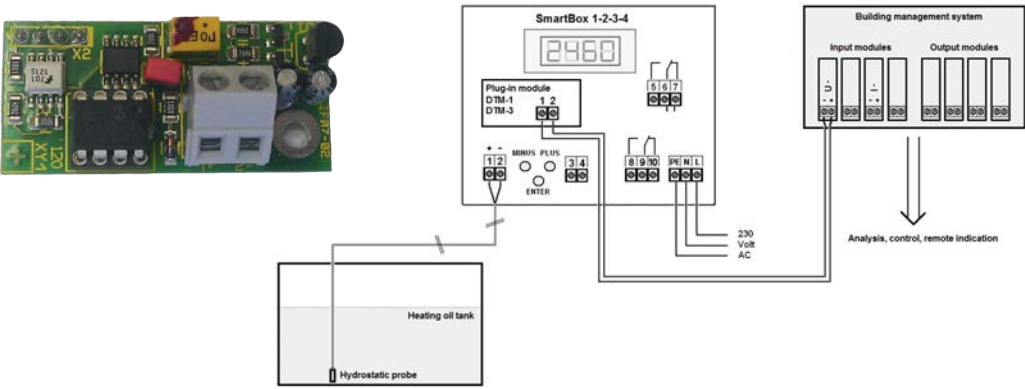
- Control unit without probe
- Number and type of probes to be determined



|   | Weight kg | Part no. | €        |
|---|-----------|----------|----------|
| SmartBox® 4 Pro GSM IP54 (control unit without submersible probe) | 1,16      | 308 062  | 1 932,00 |


Analogue output for SmartBox® 1, 2, 3, 4 et 4 Pro

The DTM module is proposed as an option to provide an analogue output signal to a measuring input control / regulatory / acquisition systems such as in a building management system.



|              | Analogue output signal | Power supply         | Weight Kg | Part no. | €      |
|--------------|------------------------|----------------------|-----------|----------|--------|
| DTM 1 Module | 0 - 5 V                | With SmartBox®       | 0,02      | 308 067  | 208,90 |
| DTM 3 Module | 4 - 20 mA              | 9 - 24 V DC          | 0,02      | 308 068  | 274,70 |
| DTM 4 Module | M-Bus                  | With M-Bus protocole | 0,03      | 308 069  | 449,20 |

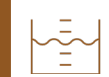
Spare parts SmartBox® 1, 2, 3, 4 et 4 Pro

| Accessories and spare parts  | Weight kg | Part no. | €        |
|--|-----------|----------|----------|
| Control unit SmartBox® 1 IP54  | 0,67      | 308 073  | 482,00   |
| Control unit SmartBox® 2 IP54  | 0,70      | 308 076  | 670,00   |
| Control unit SmartBox® 3 IP30  | 0,69      | 308 078  | 671,00   |
| Control unit SmartBox® 4 GSM IP54  | 0,95      | 308 079  | 1 558,00 |
| Control unit SmartBox® 4 Pro GSM IP54  | 1,16      | 308 062  | 1 932,00 |
| Submersible probe 0/250 mbar with 6 m cable (acc. 1,0%)  | 0,20      | 308 071  | 722,00   |
| Submersible probe 0/250 mbar with 6 m cable (acc. 0,5%)  | 0,62      | 308 099  | 822,00   |
| Submersible probe 0/500 mbar with 10 m cable (acc. 1,0%)   | 0,46      | 308 093  | 902,00   |
| Submersible probe 0/1000 mbar with 15 m cable (acc. 1,0%)  | 0,63      | 308 094  | 1005,00  |
| Mounting kit for probe (adapters G1" x G1" 1/2 x G2" M and cable gland)  | 0,08      | 308 072  | 20,40    |
| Junction box IP66 with pressure relief port  | 0,16      | 308 083  | 73,40    |
| Optional accessories - ATEX approval  | Weight kg | Part no. | €        |
| Submersible ATEX probe 0/250 mbar with 6 m cable acc. 0,25 %. (ATEX II 1G EEx ia IIC T4 / T6)                              | 0,89      | 308 082  | 1 970,00 |
| Junction box IP66 with pressure relief port for ATEX probe   | 0,18      | 308 081  | 113,50   |
| ZENER safety barrier for ATEX probe  | 0,16      | 308 085  | 619,00   |
| Junction box IP65 for ZENER safety barrier   | 0,51      | 308 086  | 201,10   |



! Moisture proof junction box IP66 with pressure relief port for protection of probe cable extensions.

! The ATEX probe must be fitted with ZENER safety barrier and junction box (ex. gasoline, super).



# Smartbox Air Wi-Fi battery-operated level gauge



**Designation**

The SmartBox AIR Wi-Fi is a battery-operated, electronic remote level gauge for a non-pressurised tank with a liquid medium. This innovative tank monitoring measures the tank filling level using a pneumatic measurement principle and displays it on the screen (L, m or %) for maximum safety and efficiency.

- Operating**
- Installation is simple : Insert the measuring tube with weight nozzle into the tank, then mount the tube to the display unit. A detailed assembly manual guides you through the process.
  - App-based remote monitoring is only possible when connected to a WIFI network. Via the local Wi-Fi network, the SmartBox AIR Wi-Fi transmits the data to the corresponding app. The user has also connected the device to their local Wi-Fi network and added it to the monitoring system in the app by scanning a QR code on the device using their smartphone. This allows the user to receive up-to-date information such as the tank filling level or battery status anytime their smart-phone or tablet is connected to a mobile network anywhere in the world. If not, the device can display measurement data locally on the unit and allows manual measurements

| TECHNICAL SPECIFICATIONS         |   |
|----------------------------------|---|
| Measuring hose                   |   |
| Application                      | Suitable for the following media: fuel oil, diesel, FAME, fuel oil bio, HVO, waste oil, vegetable oil, rainwater and other water-endangering, non-flam-mable liquids. |
| Measuring range                  | Up to 4 m (water) and 4,50 m (fuel oil)   |
| Measuring accuracy               | ± 1% of the measuring range end value   |
| Connection thread                | G1" x 1" ½ M and cable gland  |
| Length                           | 10m   |
| Protection                       | IP68  |
| Control unit SmartBox AIR Wi-Fi  |   |
| User language                    | English, German, French, Dutch, Spanish, Polish   |
| Dimensions display unit (HxWxD)  | 144 x 99 x 45 mm  |
| Housing material                 | Plastic ABS / PC  |
| Type of protection               | IP30 acc. to EN 60529 (intended for indoor use)   |
| Power supply unit (not included) | 5 V, 2 A, USB-C   |
| Ambient temperature              | 0°C to + 50°C   |

|                    |                      |                 |                   |
|--------------------|----------------------|-----------------|-------------------|
|                    |                      |                 |                   |
| Level reading      | Interface management | Event signaling | Data transmission |
| SmartBox AIR Wi-Fi |                      |                 |                   |



- Composition**
- Control unit SmartBox AIR WI-Fi
  - Measuring hose Lg 10m
  - Connections G1" x 1" ½ M
  - Cable gland



- Advantages**
- Suitable for all tank shapes, tank height up to 4 m (water) et 4,50 m (fuel oil)
  - Easy installation, easy assembly and start-up even without special knowledge (configuration via mobile or tablet)
  - Measurement intervals can be customized, ranging from hourly, daily, weekly to monthly, depending on your needs.
  - Long battery life (at least one year with daily measurement). Easy charging via USB-C interface.
  - Multilingual app (menu available in multiples languages for international users DE, EN, FR, NL, SP, PL)



# SmartBox® AIR Wi-Fi



## Application exemple

|  | Weight kg | Part no. | €      |
|--|-----------|----------|--------|
| Level indicator SmartBox AIR Wi-Fi - IP30 (with measuring line 10 m) | 0,87      | 308 047  | 300,00 |







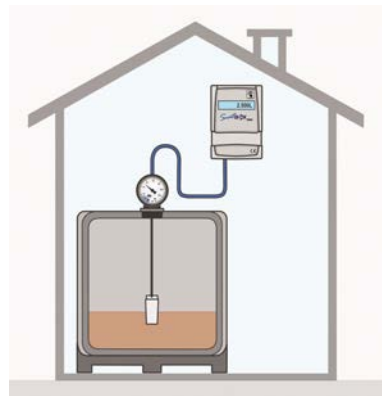
Electro-mechanical level gauge SmartBox® MINI

Operates without power supply

- Universal, electro-mechanical level indicator consisting of a battery-operated control unit with digital display and a mechanical gauge FSA-E
- Continuous level reading on the mechanical gauge FSA-E (cm) and on the digital display unit with Push-to-Read function (L, cm or %)

TECHNICAL SPECIFICATIONS

| Mechanical level indicator FSA-E |  |
|----------------------------------|--|
| Medium                           | Fuel oil, biofuel, diesel fuel, biodiesel, new oils, waste oils, rain water, oil-water mixtures, AdBlue® |
| Measuring range                  | 0 to 160 cm (0 to 150 cm max. filling level)<br>0 to 250 cm (0 to 240 cm max. filling level)             |
| Connection thread                | G1" ½ M  |
| Float                            | Ø 38 mm  |
| Float material                   | HDPE (white)   |
| Operating temperature range      | 0 °C to +40 °C   |
| Connection cable                 | 10 m (max. 50 m) cable extension LIYY, section 5 × 0,25 mm² Ø cable 4,5 to 6 mm                          |
| Control unit SmartBox® MINI      |  |
| Housing                          | Impact - resistant plastic (ABS)<br>W × H × D : 144 × 99 × 45 mm   |
| Measuring accuracy               | ± 2 % of FSA-E value   |
| Degree of protection             | IP30   |
| Supply voltage                   | 1,5 V (3 × AA batteries)   |



|   | Weight kg | Part no. | €      |
|---|-----------|----------|--------|
| SmartBox® MINI IP30 (with FSA-E 0/160 cm, 10 m cable) | 1,14      | 308 050  | 279,00 |
| SmartBox® MINI IP30 (with FSA-E 0/250 cm, 10 m cable) | 1,17      | 308 051  | 260,30 |

SPARE PARTS

|  | Weight kg | Part no. | €      |
|--|-----------|----------|--------|
| Mechanical level gauge FSA-E (0 to 160 cm) | 0,21      | 308 052  | 50,10  |
| Mechanical level gauge FSA-E (0 to 250 cm) | 0,23      | 308 053  | 50,10  |
| Control unit SmartBox® MINI                | 0,43      | 308 060  | 187,60 |
| 10 m cable with FSA-E connection           | 0,41      | 308 054  | 62,50  |



Scope of delivery

- Control unit SmartBox® MINI
- Mechanical level indicator FSA-E
- 3 × AA batteries
- 10 m cable (50 m max.)



Advantages

- Suitable for all tank shapes
- Easy, simple and quick installation
- Economical product (automatic sleep mode to prolong batteries' life)
- Digital display in L, cm or %
- Quick reading by pressing the SENSOR touch (Push-to-Read function)
- Remote measurement (up to 50 m by cable extension)



Scope of delivery

- Control unit SmartBox® 1, 2 or 3
- Mechanical level indicator FSA-W
- 10 m cable (100 m max.)



Advantages

- Suitable for all tank shapes
- Easy, simple and quick installation
- Digital display in L, cm and equivalence in %
- Remote measurement (up to 100 m by cable extension)
- Alarme, relay contact (depending on model)



Options

- Analogue output 0-5 V, 4-20 mA, M-Bus via DTM module

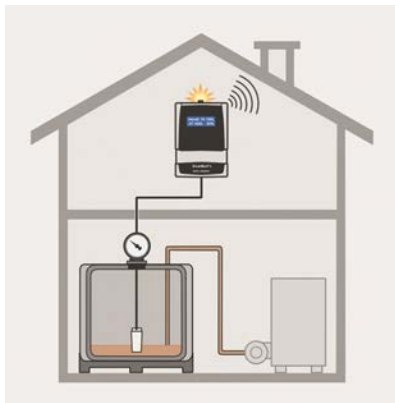


Electro-mechanical level gauge SmartBox® FSA-W

- Universal, electro-mechanical level indicator consisting of a control unit with digital display and a mechanical gauge FSA-W
- Continuous level reading on the mechanical gauge FSA-W (cm) and on the digital display unit (L or cm, equivalence in %)

TECHNICAL SPECIFICATIONS

| Mechanical level indicator FSA-W             |  |
|--|--|
| Medium                                       | Fuel oil, biofuel, diesel fuel, biodiesel, new oils, waste oils, rain water, oil-water mixtures, AdBlue® |
| Measuring range                              | 0 to 250 cm (0 to 240 cm max. filling level)   |
| Connection thread                            | G1" ½ M  |
| Float  | Ø 38 mm  |
| Float material                               | HDPE (white)   |
| Operating temperature range                  | 0 °C à +50 °C  |
| Connection cable                             | 10 m (max. 100 m) cable extension, min. section 2 × 0,50 mm²   |
| Measuring accuracy                           | ± 3 % of FSA-W value   |
| Control unit SmartBox® 1, 2, 3               |  |
| User language                                | French, English, German  |
| Protection                                   | IP30   |
| Power supply                                 | 230 V AC 50 Hz   |
| Analogue output signal (optional DTM module) | 4-20 mA, 0-5 V, M-Bus  |



|                  | Level reading | Interface management | Relay contact | Visual / audible alarm |
|------------------|---------------|----------------------|---------------|------------------------|
| SmartBox® 1 IP30 | ●             | ●                    | 0             |                        |
| SmartBox® 2 IP30 | ●             | ●                    | 2             |                        |
| SmartBox® 3 IP30 | ●             | ●                    | 1             | ●                      |

|  | Weight kg | Part no. | €      |
|--|-----------|----------|--------|
| SmartBox® 1 IP30 (with FSA-W 0/250 cm, 10 m cable) | 1,50      | 308 087  | 703,00 |
| SmartBox® 2 IP30 (with FSA-W 0/250 cm, 10m cable)  | 1,50      | 308 088  | 891,00 |
| SmartBox® 3 IP30 (with FSA-W 0/250 cm, 10m cable)  | 1,50      | 308 089  | 892,00 |

SPARE PARTS

|  | Weight kg | Part no. | €      |
|--|-----------|----------|--------|
| Mechanical level indicator FSA-W (0/ 250 cm) with 10 m cable | 0,63      | 308 070  | 221,00 |



DATASHEET  
AVAILABLE



## Mechanical level gauge Mano-Clock Multi

- Universal, mechanical level gauge suitable for all indoor and outdoor tanks
- Corrosion-resistant and high quality UV - resistant according to EN ISO 4892-1
- Big meter house (Ø 110 mm) for a better reading
- Can be easily adjusted to the desired tank height by using the screddriver « FULL »
- Design-gasket preventing the spread of oil odour

### TECHNICAL SPECIFICATIONS

|                                    |  |  |  |
|------------------------------------|--|--|--|
| <b>Medium</b>                      | Fuel oil, diesel fuel (EN 590), Biofuel FAME (EN 14213), Biodiesel FAME (EN 14214) and motor oil |  |  |
| <b>Measuring range</b>             | 0/200 cm or 0/250 cm   |  |  |
| <b>Connection thread</b>           | G1" ½ M  |  |  |
| <b>Operating temperature range</b> | -30 °C to +50 °C   |  |  |
| <b>Measuring accuracy</b>          | ± 3 %  |  |  |
| <b>Meter house</b>                 | Ø 110 mm   |  |  |
| <b>Float</b>                       | Ø 36 mm  |  |  |
| <b>Float material</b>              | POM  |  |  |

|  | Weight kg | Part no. | €     |
|--|-----------|----------|-------|
| Mechanical gauge Mano-Clock Multi 0/200 cm (G1" ½ M) | 0,31      | 308 059  | 51,10 |
| Mechanical gauge Mano-Clock Multi 0/250 cm (G1" ½ M) | 0,31      | 308 061  | 51,10 |

DATASHEET  
AVAILABLE

AdBlue®



## Mechanical level gauge FSA

- Universal, mechanical level indicator with plastic gear
- For continuous level measurement in all tank shapes
- Supplied with a sticker for marking the « MAX » level and an odour-tight gasket

### TECHNICAL SPECIFICATIONS

|                                    |  |  |  |
|------------------------------------|--|--|--|
| <b>Medium</b>                      | Fuel oil, biofuel, diesel fuel, biodiesel, new oils, waste oils, rain water, oil-water mixtures, AdBlue® ... |  |  |
| <b>Measuring range</b>             | 0/160 cm or 0/250 cm   |  |  |
| <b>Connection thread</b>           | G1" ½ or G2" M   |  |  |
| <b>Operating temperature range</b> | 0 °C à +40 °C  |  |  |
| <b>Measuring accuracy</b>          | ± 3 %  |  |  |
| <b>Meter house</b>                 | Ø 75 mm  |  |  |
| <b>Float</b>                       | Ø 38 mm  |  |  |
| <b>Float material</b>              | HDPE (white)   |  |  |

|   | Weight kg | Part no. | €     |
|---|-----------|----------|-------|
| Mechanical gauge FSA 0/160 cm (G1" ½ M) | 0,20      | 308 057  | 21,30 |
| Mechanical gauge FSA 0/160 cm (G2" M)   | 0,20      | 308 058  | 23,30 |
| Mechanical gauge FSA 0/250 cm (G1" ½ M) | 0,23      | 308 055  | 19,10 |
| Mechanical gauge FSA 0/250 cm (G2" M)   | 0,23      | 308 056  | 20,60 |



DATASHEET  
AVAILABLE

NEW

AdBlue®

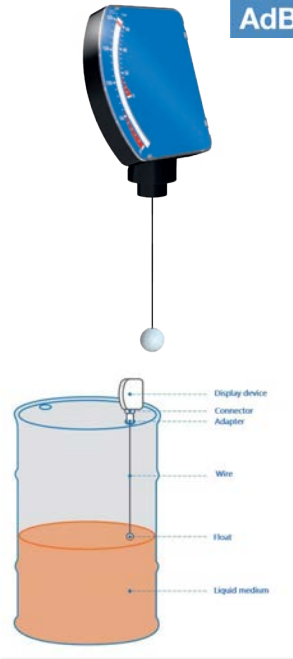
## Level gauge for jerrycans & drums

- Universal mechanical float level gauge with a graduated dial indicating the volume in liters for standard 60L / 200L / 220L jerrycans and drums

### DONNÉES TECHNIQUES

|                        |  |  |  |
|------------------------|--|--|--|
| <b>Application</b>     | Intended for use with liquid fluids such as heating oil, diesel, antifreeze, coolant, windshield washer fluid, fluid oils up to SAE 50, water, oil-water mixtures, AdBlue®, and fluids with a density > 0.7 kg/cm³ |  |  |
| <b>Measuring range</b> | Suitable for standard 60L / 200L / 220L jerrycans and drums  |  |  |
| <b>Reading</b>         | Liters   |  |  |
| <b>Dimensions</b>      | H 153 x W 106 x D 46 mm  |  |  |
| <b>Fluid density</b>   | > 0,7 kg/cm3   |  |  |
| <b>Connection</b>      | 3/4"   |  |  |

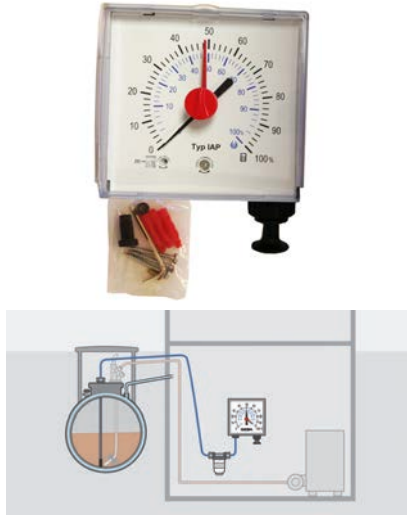
|                                     | Weight kg | Part no. | €     |
|-------------------------------------|-----------|----------|-------|
| Level gauge for jerrycans and drums | 0,30      | 308 150  | 65,00 |



## Pneumatic level gauge SKALA

- Universal, pneumatic level gauge for continuous level measurement in tanks containing fuel oil and diesel fuel
- For tanks heights from 900 to 3,000 mm (fully adjustable) with remote measurement up to 50 m
- No power supply required
- Zero correction possible, reference pointer for easy consumption monitoring
- Measuring accuracy ± 3 % of full scale, indication in % volume
- A dual scale suitable for rectangular and cylindrical tanks
- Connection copper pipe or PE hose (Ø 6 or 4 mm)

|                             | Weight kg | Part no. | €      |
|-----------------------------|-----------|----------|--------|
| Pneumatic level gauge SKALA | 0,55      | 308 152  | 102,90 |



## Scale in liters

- Interchangeable PVC scale for pneumatic level indicator
- For cylindrical tanks

|                 | Litreage (L) | Part no. | €     | Litreage (L) | Part no. | €     |
|-----------------|--------------|----------|-------|--------------|----------|-------|
| Scale in liters | 3 000        | 308 154  | 28,80 | 20 000       | 308 160  | 28,80 |
| Scale in liters | 7 000        | 308 156  | 28,80 | 25 000       | 308 161  | 28,80 |
| Scale in liters | 10 000       | 308 157  | 28,80 | 30 000       | 308 162  | 28,80 |
| Scale in liters | 13 000       | 308 158  | 28,80 | 40 000       | 308 163  | 28,80 |
| Scale in liters | 16 000       | 308 159  | 28,80 | 50 000       | 308 165  | 28,80 |

(while stocks last)







Pneumofix kit



Function

- Complete, universal mounting kit for pneumatic level indicators SKALA consisting of PVC measuring line (4 x 1 mm), 20 m, with 30 x nail cable clips, hose connector (4 x 4 mm) and mounting accessories.

Application

- Can be used for tanks of up to 3,000 mm in height or diameter containing fuel oil or AdBlue®

Options

- Consisting of screw fitting with dual thread G½ and G1
- Reducer G1 x 1½ x 2
- Standpipe in tank with balance chamber

Specifications

- Length : 20 m

|               | Weight kg | Part no. | €      |
|---------------|-----------|----------|--------|
| Pneumofix kit | 0,54      | 308 153  | 113,70 |



DATASHEET  
AVAILABLE



- Tank withdrawal system Multiflex
- For withdrawal of fuel oil from underground and aboveground tanks in single-line or dual-line mode
- Combination fitting made of sof level sensor and withdrawal system with measuring line connection for PE hose (Ø 4 x 1 mm) or copper pipe (Ø 6 x 1 mm)
- Universal compression fittings for pipes with 8 / 10 / 12 mm outside diameter for connecting the suction line are enclosed
- Quick-action shut-off valve with lever for remote closing in emergency situations
- Suction hose 2,10 m with spacer and star
- Sunction / return line : G3 / 8" F
- Tank : G1" M (with adapter G2" M x 1" F)

| Olives | Weight kg | Part no. | €     |
|--------|-----------|----------|-------|
| Soft   | 0,72      | 107 705  | 47,10 |
| Brass  | 0,70      | 107 706  | 53,00 |

Condensate trap



- For protection of pneumatic level indicators against condensate
- Can be easily unscrewed for emptying
- Made of high-grade, impact-resistant plastic
- Universal connections for hose or pipe Ø 6 mm outside diameter

|                 | Weight kg | Part no. | €     |
|-----------------|-----------|----------|-------|
| Condensate trap | 0,16      | 308 077  | 40,60 |



Tank union

- Brass union G3 / 8" M

|            | Weight kg | Part no. | €     |
|------------|-----------|----------|-------|
| Tank union | 0,04      | 308 074  | 20,60 |



Secure Mains Multi-Zone tank alarm



DATASHEET  
AVAILABLE

- Mains multi - channel tank alarm for alerting of a combination or all of the following tank states : high, low and / or bund
- 90 dB sounder & flashing orange strobe to warn of a problem
- Zone in question lights up on the screen to clearly indicate the activated tank state
- Test & alarm mute functions
- Automatically reversed float logic for low zones
- **Please note : If your configuration is not listed below, select the box only & the probes you need separately (see fuel probes and for other liquids)**

TECHNICAL SPECIFICATIONS

| Multi-Zone Alarm         |  |
|--------------------------|--|
| User language            | English  |
| Material                 | Polycarbonate  |
| Dimensions (L x H x D)   | 145 x 242 x 110 mm   |
| Degree of protection     | IP55 (indoor or outdoor against the weather)                                       |
| Power supply             | 110 ou 230 V AC ; 50-60 Hz ; 1.0 A<br>12 ou 24 V DC ; 1.0 A                        |
| Temperature              | -20 °C to +50 °C   |
| Max. altitude            | 2,000 m  |
| Sound output             | 90 dB  |
| Number of alerts         | 3 max. (High, Low and / or Bund)   |
| Number of relay contacts | 3  |
| Cable                    | 5 m (max. 50 m for mains and max. 20 m for battery version) - 2 x 22AWG (0,65 mm²) |



|  | Power supply          | Fuel probe          | Relays | Zones                       | Weight kg | Part no. | €      |
|--|-----------------------|---------------------|--------|-----------------------------|-----------|----------|--------|
| Secure Mains Multi - Zone alarm IP55 (box only)                                  | 12 / 24 / 110 / 230 V | 0                   | 3      | Multi - High or Low or Bund | 1,10      | 308 210  | 573,00 |
| Secure Mains Multi - Zone alarm IP55 (c / w 3 single fuel probes 5 m)            | 12 / 24 / 110 / 230 V | 3 single            | 3      | Multi - High or Low or Bund | 2,00      | 308 211  | 852,00 |
| Secure Mains Multi - Zone alarm IP55 (c / w 1 double & 1 single fuel probes 5 m) | 12 / 24 / 110 / 230 V | 1 double & 1 single | 3      | Multi - High or Low or Bund | 2,00      | 308 212  | 840,00 |

Secure fuel tank alarm probe

- The fuel tank alarm probes are designed for use with the industry alarms (see pages 29 - 30) to accurately detect and alert the user of one, a combination, or all of the following tank states (magnetic reversible float level switch) :

**H = HIGH** (High fuel level) to help avoid further filling of the tank and an overspill from occurring

**L = LOW** (Low fuel level) to indicate that stock is running out and a fuel delivery needs to be ordered

**B = BUND** (Bund alert) to warn that fluid is present in the bund compartment which may indicate a leak or the ingress of rain water

- As standard, these probes are designed for installation onto steel tanks, for plastic tanks the plastic tank kit is aslo required

Double fuel probe



Simple fuel probe



Plastic tank kit



|                                     | Alerts              | Construction     | Cable                           | Temperature      | Connection           | Weight kg | Part no. | €      |
|-------------------------------------|---------------------|------------------|---------------------------------|------------------|----------------------|-----------|----------|--------|
| 5 m single Secure fuel alarm probe  | High or Low or Bund | NBR, nylon, inox | 5 m PVC<br>2 x 22AWG (0,65 mm²) | -20 °C to +80 °C | 1 ½" F BSP brass cap | 0,50      | 308 200  | 93,00  |
| 9 m single Secure fuel alarm probe  | High or Low or Bund | NBR, nylon, inox | 9 m PVC<br>2 x 22AWG (0,65 mm²) | -20 °C to +80 °C | 1 ½" F BSP brass cap | 1,00      | 308 201  | 107,90 |
| 5 m double Secure fuel alarm probe  | High & Low          | NBR, nylon, inox | 5 m PVC<br>2 x 22AWG (0,65 mm²) | -20 °C to +80 °C | 1 ½" F BSP brass cap | 1,00      | 308 202  | 174,00 |
| 9 m double Secure fuel alarm probe  | High & Low          | NBR, nylon, inox | 9 m PVC<br>2 x 22AWG (0,65 mm²) | -20 °C to +80 °C | 1 ½" F BSP brass cap | 2,00      | 308 203  | 198,30 |
| Plastic tank kit - for single probe |                     |                  |                                 |                  |                      | 0,20      | 308 204  | 20,40  |
| Plastic tank kit - for double probe |                     |                  |                                 |                  |                      | 0,20      | 308 205  | 26,10  |



AdBlue®  
Single fuel probe



AdBlue® High-Level Sensor

## Secure Economy tank level alarm

- An economical, entry level tank alarm solution if only one level alert is required
- Can be used to indicate that the tank level has reached either a high or low state depending upon requirements
- Battery powered for use on portable installations or sites where mains power is inaccessible
- Flashing red LED & 90 dB alarm will sound to alert the user that the set level has been reached
- Test & alarm mute functions
- IP55 enclosure with 4 external mounting lugs
- Simple operation means battery will last in excess of 72 hours in full alarm mode, making it ideal for sites not always manned
- Version available with 5 m diesel / oil probe and version without for use with other fluids (select other fluid probe from page 28). For high level AdBlue® version, it has an encapsulated probe, ensuring reliable cut off even when crystallised
- C / w 3 cut to size stickers to name the LED - 2 labelled high & low and 1 blank to name it something else with permanent marker

### TECHNICAL SPECIFICATIONS

| Alarm Eco Level        |  |
|------------------------|--|
| Medium                 | Fuel, diesel or AdBlue® version  |
| User language          | English  |
| Dimensions (L × H × D) | 155 × 95 × 60 mm   |
| Degree of protection   | IP55 (indoor or outdoor against the weather)                                       |
| Temperature            | -20 °C to +50 °C   |
| Battery                | 1 × PP3 Alkaline (9 V)   |
| Service life           | Can operate more than 2 years in standby operation and 72 hours in full alarm mode |
| Cable                  | 5 m (max 20 m for battery) 2 × 22AWG (0,65 mm²)                                    |

|  | Battery       | Probe | Zones                | Weight kg | Part no. | €      |
|--|---------------|-------|----------------------|-----------|----------|--------|
| Secure Economy tank level alarm IP55 (c / w 5 m single fuel probe)   | 1 × PP3 (9 V) | 1     | Single - High or Low | 1,00      | 308 220  | 231,40 |
| Secure Economy high level / overfill alarm (c / w 5 m AdBlue® probe) | 1 × PP3 (9 V) | 1     | Single - High only   | 1,00      | 308 221  | 320,50 |
| Secure Economy tank level alarm IP55 (box only)                      | 1 × PP3 (9 V) | 0     | Single - High or Low | 0,43      | 308 222  | 173,70 |



AdBlue®  
Single fuel probe



AdBlue® leak sensor

## Secure Economy bund alarm

- An economical, entry level tank alarm c / w 5 m single probe to alert of presence of fluid in the bund
- Simple & cost effective solution if only bund alert is required
- Used to indicate either the inner tank leaking into the bund or excess rain water and debris that has built up
- Battery powered for use on portable installations or sites where mains power is inaccessible
- Flashing red LED & 90 dB alarm will sound to alert the user that the set level has been reached
- Test & alarm mute functions
- IP55 enclosure with 4 external mounting lugs
- Simple operation means battery will last in excess of 72 hours in full alarm mode, making it ideal for sites not always manned
- Suitable for use with diesel and light oils

### TECHNICAL SPECIFICATIONS

| Alarm Eco Level        |  |
|------------------------|--|
| Medium                 | Fuel, diesel or AdBlue® version  |
| User language          | English  |
| Dimensions (L × H × D) | 155 × 95 × 60 mm   |
| Degree of protection   | IP55 (indoor or outdoor against the weather)                                       |
| Temperature            | -20 °C to +50 °C   |
| Battery                | 1 × PP3 Alkaline (9 V)   |
| Service life           | Can operate more than 2 years in standby operation and 72 hours in full alarm mode |
| Cable                  | 5 m (max. 20 m for battery) 2 × 22 AWG (0,65 mm²)                                  |

|  | Battery       | Probe | Zones         | Weight kg | Part no. | €      |
|--|---------------|-------|---------------|-----------|----------|--------|
| Secure Economy bund alarm IP55 (c / w 5 m single fuel probe) | 1 × PP3 (9 V) | 1     | Single - Bund | 1,00      | 308 230  | 225,50 |
| Secure Economy bund alarm IP55 (c / w 5 m AdBlue® probe)     | 1 × PP3 (9 V) | 1     | Single - Bund | 1,00      | 308 231  | 275,70 |
| Secure Economy bund alarm IP55 (box only)                    | 1 × PP3 (9 V) | 0     | Single - Bund | 0,43      | 308 232  | 167,20 |



## Secure alarm probes for other fluids

- **Water & Chemical Probe**
  - Single probe for high or low level alerts on water & chemical tanks (magnetic reversible float level switch)
  - Please note : Chemical compatibility must be checked
- **High Viscosity Probe**
  - Single probe for high or low level alerts on tanks containing thick fluids, heavy fuel oils and liquids containing some debris
  - Popular on waste oil tanks
  - For high level also suitable for liquids that crystallise e.g. AdBlue®
- **Oil Drum Probe**
  - Single probe for alerting of a high level in a drum
  - Designed specifically for waste oil storage systems when the user needs to be aware when the container needs to be emptied

Water & Chemical



High Viscosity

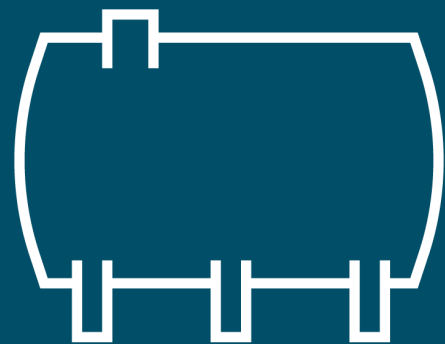


Oil drum



|                                     | Alerts      | Construction             | Cable   | Temperature      | Connection             | Weight kg | Part no. | €      |
|-------------------------------------|-------------|--------------------------|---------|------------------|------------------------|-----------|----------|--------|
| Secure Water & Chemical probe       | High or Low | Polypro body & PE weight | 5 m PVC | -20 °C to +80 °C | 1 ½" F BSP PE cap      | 0,20      | 308 206  | 97,70  |
| Secure High viscosity probe         | High or Low | Polyprop                 | 5 m PVC | 0 °C to +60 °C   | 1 ½" F BSP PE cap      | 0,57      | 308 207  | 175,40 |
| Secure Oil drum probe               | High        | Buna, nylon & polyprop   | 5 m PVC | -20 °C to +80 °C | 3/4" M BSPT steel drum | 0,25      | 308 208  | 124,20 |
| Plastic tank kit - for single probe |             |                          |         |                  |                        | 0,20      | 308 204  | 20,40  |





# TANK EQUIPMENT



|                                 |    |
|---------------------------------|----|
| ATMOSPHERIC VENT, VALVE .....   | 34 |
| ALARM WHISTLE.....              | 35 |
| FILLER CAP, TANK LOCK.....      | 36 |
| ANTI - SIPHON VALVE.....        | 37 |
| FUEL OIL HAND PUMP .....        | 38 |
| PLUG VALVE .....                | 40 |
| PLASTIC REDUCER.....            | 40 |
| CERTIFICATE OF CONFORMITY ..... | 40 |
| FUEL OIL FILTER .....           | 41 |

| SIZE CORRESPONDENCE |          |          |
|---------------------|----------|----------|
| DN (mm)             | Inch (") | Ø (mm)   |
| DN8                 | 1/4"     | 8 /13    |
| DN10                | 3/8"     | 12 /17   |
| DN15                | 1/2"     | 15 /21   |
| DN20                | 3/4"     | 20 /27   |
| DN25                | 1"       | 26 /34   |
| DN32                | 1"1/4    | 33 /42   |
| DN40                | 1"1/2    | 40 /49   |
| DN50                | 2"       | 50 /60   |
| DN65                | 2"1/2    | 66 /76   |
| DN80                | 3"       | 80 /90   |
| DN100               | 4"       | 102 /114 |



For all products marked with “Datasheet Available”, please visit our website [www.selfclimat.com](http://www.selfclimat.com) or contact us





## Atmospheric vent with flame screen



- Stainless steel grid and strainer
- Allows the storage tank to be protected against the rain water
- Easy and quick to set up : direct mounting on smooth venting tube
- Easy removal of flame screen for visual inspection and cleaning, if required
- Tightening on the pipe by a stainless steel screw
- Can be oriented 360°
- ATEX : suitable for use in zone 0
- Very good corrosion resistance
- Versions in DN32 available upon request



| Hydrocarbon with flame screen             | Weight kg | Part no. | €      |
|---|-----------|----------|--------|
| Atmospheric vent DN40 aluminium           | 0,32      | 308 310  | 45,70  |
| Atmospheric vent DN50 aluminium           | 0,86      | 308 311  | 70,80  |
| Atmospheric vent DN65 aluminium           | 0,90      | 308 314  | 120,00 |
| Hydrocarbon and AdBlue® with flame screen |           |          |        |
| Atmospheric vent DN40 polypropylène       | 0,34      | 308 312  | 29,00  |
| Atmospheric vent DN50 polypropylène       | 0,11      | 308 313  | 34,60  |



## Vents

- Universal PVC vents are supplied with an adapter
- Metal vents are supplied with a protective screen

| Vent           | Size            | Weight kg | Part no. | €     |
|----------------|-----------------|-----------|----------|-------|
| Universal PVC  | 1" and 1" 1 / 4 | 0,05      | 308 027  | 6,80  |
| Threaded PVC   | 1" F            | 0,02      | 308 029  | 7,90  |
| Threaded PVC   | 1" 1 / 4 F      | 0,02      | 308 030  | 8,40  |
| Threaded PVC   | 1" 1 / 2 F      | 0,02      | 308 031  | 4,30  |
| Threaded PVC   | 2" F            | 0,03      | 308 032  | 8,70  |
| Threaded PVC   | 2" 1 / 2 F      | 0,04      | 308 033  | 15,90 |
| Threaded PVC   | 2" M            | 0,03      | 308 034  | 8,40  |
| Threaded metal | 1" F            | 0,08      | 308 000  | 8,00  |
| Threaded metal | 1" 1 / 4 F      | 0,11      | 308 001  | 9,20  |
| Threaded metal | 1" 1 / 2 F      | 0,13      | 308 002  | 9,60  |
| Threaded metal | 2" F            | 0,18      | 308 003  | 11,10 |



## Airing and venting valve yellow

- Material : PA 6 body, NBR seal
- Working pressure : -0,1 Bar / +0,15 Bar

|                          | Size | Weight kg | Part no. | €     |
|--------------------------|------|-----------|----------|-------|
| Airing and venting valve | 2" M | 0,13      | 308 040  | 45,60 |



## Alarm whistle

- To be used as part of a control chain for overfill alarm systems when other safety equipment are not recommended
- The air coming out during the filling triggers a whistle which stops when the liquid reaches approx. 95 % of the tank volume
- Fitting on tank G1" ¼ x 1" ½ M
- Fitting on vent tube G1" ¼ F

|               | Weight kg | Part no. | €     |
|---------------|-----------|----------|-------|
| Alarm whistle | 0,33      | 308 120  | 31,30 |



## Horn/Light alarm WM

- 98 dB sounder & flashing alarm for indoor and outdoor use
- PC / ABS material
- The alarm horn must be oriented down
- Integrated bracket for simple wall mounting without additional accessories

### TECHNICAL SPECIFICATIONS

| Horn / Light alarm WM |   |
|-----------------------|---|
| Material              | PC / ABS  |
| Dimension (L x H x D) | 83 x 235 x 91 mm  |
| Degree of protection  | IP65 (indoor or outdoor, protected against the weather) |
| Power supply          | 230 V AC ; 50 Hz ; 50 mA                                |
| Temperature           | -20 °C to +50 °C  |
| Type de fixing        | Vertical wall mounting                                  |
| Volume / dB (max.)    | 98,0 dB (A)   |
| Acoustic signal       | Continuous tone   |
| Optical signal        | LED   |

|                            | Weight kg | Part no. | €      |
|----------------------------|-----------|----------|--------|
| Horn / Light alarm WM IP65 | 0,10      | 308 215  | 197,10 |







Symmetrical union

- Bayonet union, cap and chain
- Zamak 2" serie
- Aluminium 3" serie

|                        | Weight kg | Part no. | €     |
|------------------------|-----------|----------|-------|
| Symmetrical union 2" M | 0,54      | 308 011  | 31,70 |
| Symmetrical union 2" F | 0,42      | 308 012  | 28,50 |
| Symmetrical union 3" M | 1,97      | 308 021  | 68,30 |
| Symmetrical union 3" F | 0,73      | 308 022  | 65,40 |



Filling hole plug

- Union, cap and chain – zamak material

|                                     | Weight kg | Part no. | €     |
|-------------------------------------|-----------|----------|-------|
| Filling hole plug G 2" M x G 2" ½ M | 0,55      | 308 013  | 29,60 |

★ NEW

Gauging plug

- Stainless steel : cap (SS CF8M), chain (SS 304), NBR seal
- Zamak : cap (zamak), chain (brass)

|   | Weight kg | Part no. | €     |
|---|-----------|----------|-------|
| Stainless gauging plug Rp 1" F x G 1" 1/4 M | 0,60      | 308 017  | 20,00 |
| Zamak gauging plug Rp 1" F x G 1" 1/4 M     | 0,40      | 308 018  | 13,00 |



Fuel tank lock  
SpinSecure 2" BSP

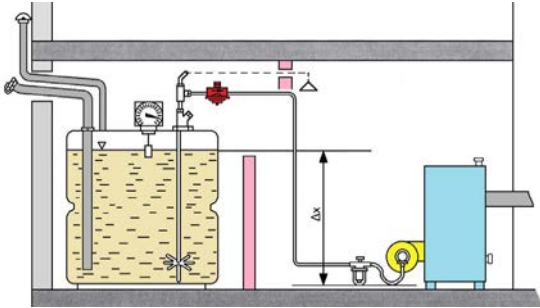
- Most secure tank lock on the market popular for domestic tanks
- Fits onto a tank's 2" BSP fill point to secure the contents against theft
- Patented design means that when cap is locked it spins freely & is almost impossible to remove
- Padlock free - design with no torque points for crowbar entry
- High security numbered lock with over 50,000 combinations
- Simple fitting with no sealants, adhesives or tools required
- Adaptor available to allow use on 2" F threads

|                                | Weight kg | Part no. | €      |
|--------------------------------|-----------|----------|--------|
| Fuel tank lock SpinSecure 2" F | 0,23      | 308 015  | 126,70 |
| Adaptor 2" M x 2" M            | 0,16      | 308 016  | 27,50  |



Anti-siphon valve

- Safety device protecting against siphoning in the event of a tank leakage (e.g. accidental pipe rupture)
- The order of 1<sup>st</sup> July 2004 states the requirement of an anti - siphon valve in a heating oil installation (refer to the national regulation in force).
- To be fitted on the highest point of the circuit
- Adjustable from 0,5 to 5 m depending on model (difference between the max. filling level and the lowest point of the suction pipe).



Diaphragm anti-siphon valve  
HS-V2

TECHNICAL SPECIFICATIONS

|                             |                            |
|-----------------------------|----------------------------|
| Safety height               | Adjustable from 0,5 to 4 m |
| Connection                  | 3 / 8" F / F               |
| Positioning                 | Vertical or horizontal     |
| Flow                        | max. 220 L/h               |
| Operating temperature range | 0 °C to +40 °C             |
| Max. test pressure          | 6 bar max.                 |
| Material                    | Zamak ZP0410               |

|                           | Height     | Weight kg | Part no. | €     |
|---------------------------|------------|-----------|----------|-------|
| Anti-siphon valve HS - V2 | 0,5 to 4 m | 0,49      | 107 073  | 83,20 |



DATASHEET  
AVAILABLE

Diaphragm anti-siphon valve  
sergovalve

DONNÉES TECHNIQUES

|                             |  |
|-----------------------------|--|
| Safety height               | Adjustable from 1,5 to 5 m except 3 / 8" |
| Connection                  | F / F                                    |
| Closure                     | By spring                                |
| Positioning                 | Horizontale                              |
| Flow                        | From 80 to 660 L/h (depending on model)" |
| Operating temperature range | 0 °C to +40 °C                           |
| Material                    | Brass, bronze                            |

|  | Height   | Flow L/h | Weight kg | Part no. | €        |
|--|----------|----------|-----------|----------|----------|
| Diaphragm anti-siphon valve sergovalve 3 / 8"                              | max. 2 m | 80       | 0,60      | 107 055  | 1 184,00 |
| Diaphragm anti-siphon valve sergovalve 3 / 4" (Production time on request) | max. 5 m | 390      | 2,85      | 107 057  | 1 654,00 |
| Diaphragm anti-siphon valve sergovalve 1"                                  | max. 5 m | 660      | 4,02      | 107 058  | 2 221,00 |

SPARE PARTS

|                             | Weight kg | Part no. | €      |
|-----------------------------|-----------|----------|--------|
| Diaphragm sergovalve 3 / 8" | 0,10      | 107 060  | 215,00 |
| Diaphragm sergovalve 1 / 2" | 0,10      | 107 061  | 364,30 |
| Diaphragm sergovalve 3 / 4" | 0,10      | 107 062  | 431,00 |
| Diaphragm sergovalve 1"     | 0,10      | 107 068  | 582,00 |



DATASHEET  
AVAILABLE



Lever action pump with ZBH

- Hand lever action pump with ZBH intended for use with 60L / 200L / 220L containers, drums and tanks.
- Application : For oils up to SAE 50, self-lubricating, non-aggressive media, undiluted anti-freeze, fuel oil, diesel, petroleum.
- Delivery rate at 60 strokes/min: Approx. 7L/min
- Lenght of suction tube : 1500 mm (PVC rigid tube)
- Barrel screw coupling : G2" Male
- Discharge : PVC discharge hose, Lg 1000 mm with plastic spout

|                            | Weight kg | Part no. | €     |
|----------------------------|-----------|----------|-------|
| Lever action pump with ZBH | 2,00      | 107 401  | 75,30 |



Barrel pump G 2" + AdBlue®

- Intended for use with 60L / 200L / 220L containers, drums and tanks.
- Application : For oils up to SAE 50, diesel, petroleum, kerosene, glycerin and antifreeze undiluted
- Application AdBlue® : For AdBlue®, urea, water, windshield washer fluid, antifreeze
- Telescopic suction tube, adjustable in length (from 355 to 955 mm)
- Delivery rate : 24 l/min

|   | Weight kg | Part no. | €      |
|---|-----------|----------|--------|
| Barrel pump G 2" with discharge hose 1,50 m | 2,30      | 107 402  | 160,50 |
| Barrel pump for AdBlue® G 2"                | 1,70      | 107 403  | 130,50 |



Barrel blue rotary pump G 2"

- Intended for use with 60L / 200L / 220L containers, drums and tanks.
- Application : For lubricants and non-aggressive media, fuel oil, diesel, petrol, coolant fluid (undiluted), antifreeze for radiator only (undiluted), hydraulic oil, machining oil, gear oil, oils up to SAE 90.
- Telescopic suction tube, adjustable in length (from 355 to 955 mm)
- Delivery rate: 18 l/min

|   | Weight kg | Part no. | €      |
|---|-----------|----------|--------|
| Barrel blue rotary pump G 2" M with discharge spout       | 2,90      | 107 404  | 106,50 |
| Barrel blue rotary pump G 2" M with discharge hose Lg 2 m | 4,50      | 107 405  | 148,50 |



Aluself tube

- For pipelines in oil firing systems suitable for FAME and bio heating oil
- Maximum allowed pressure : PS 25 bar
- Material : aluminium EN AW - 1070A
- Tube according to EN 755 - 1
- PVC sheathing, layer thickness 0,8 mm
- Min. / max. temperature TS : -5 °C to +60 °C
- Pipe screw diameter x wall thickness (10 x 1 mm)
- Coil of 50 m



|              | Ø Tube    | Weight kg | Part no. | €      |
|--------------|-----------|-----------|----------|--------|
| Tube Aluself | 8 x 10 mm | 5,65      | 107 292  | 283,60 |

Double stainless steel ball screen filter

- Brass screen filter
- Double stainless steel ball

| Size   | Weight kg | Part no. | €      |
|--|-----------|----------|--------|
| Double stainless steel ball screen filter 3 / 8" F                               | 0,08      | 107 090  | 21,10  |
| Double stainless steel ball screen filter 1 / 2" F                               | 0,13      | 107 091  | 23,70  |
| Double stainless steel ball screen filter 3 / 4" F<br><i>(while stocks last)</i> | 0,28      | 107 092  | 78,10  |
| Double stainless steel ball screen filter 1" F<br><i>(while stocks last)</i>     | 0,30      | 107 093  | 113,10 |







Plug valve

- Quick quarter turn lever operation, closure by two ball joint articulated gates
- Bronze body / cap - Brass rod / gland - Cast iron lever
- Working operation water 10 bar, fuel 10 8 bar
- Female / female PN 16



| Size                      | Weight kg | Part no. | €      |
|---------------------------|-----------|----------|--------|
| Plug valve 3 / 8" F / F   | 0,37      | 107 024  | 43,50  |
| Plug valve 1 / 2" F / F   | 0,38      | 107 026  | 43,60  |
| Plug valve 3 / 4" F / F   | 0,59      | 107 028  | 53,80  |
| Plug valve 1" F / F       | 0,80      | 107 029  | 66,70  |
| Plug valve 1" 1 / 4 F / F | 1,10      | 107 030  | 82,80  |
| Plug valve 1" 1 / 2 F / F | 1,43      | 107 031  | 106,50 |
| Plug valve 2" F / F       | 2,10      | 107 032  | 153,10 |

Plastic reducer / adapter

- For tank connection



| Plastic reducer / adapter | Material                  | Weight kg | Part no. | €    |
|---------------------------|---------------------------|-----------|----------|------|
| G2" M × 1" ½ F            | PA (suitable for biofuel) | 0,03      | 104 010  | 3,90 |
| G2" M × 1" F              | PVC                       | 0,03      | 107 089  | 4,40 |
| G1" ½ M × 1" F            | PVC                       | 0,03      | 107 088  | 4,20 |



Certificate of conformity

- A mandatory document for professional technicians working on a fuel storage tank :
  - On installation
  - On modification
- Compliant with the order of 1<sup>st</sup> July 2004
- 50 pages booklet, A4 format with 3 NCR sheets



| Weight kg                                    | Part no. | €     |
|--|----------|-------|
| Certificate of conformity (50 pages booklet) | 308 098  | 43,40 |



Single pipe filter with stop tap

- Filter for a monotube installation with a stop tap on the suction side

| Connection | Olives | Weight kg | Part no. | €     |
|------------|--------|-----------|----------|-------|
| F / F      | soft   | 0,63      | 102 060  | 39,70 |



Monotube recirculating filter

- RE - supply to the pump by reuse of the returned fluid
- Enables the return pipe to the tank to be eliminated
- Felt filter element

| Connection | Olives | Weight kg | Part no. | €     |
|------------|--------|-----------|----------|-------|
| F / F      | soft   | 0,59      | 102 062  | 49,00 |



Dual pipe filter with stop tap

- Filter for a dual tube installation with a stop tap on the suction side and a check valve on the output

| Connection | Olives | Weight kg | Part no. | €     |
|------------|--------|-----------|----------|-------|
| F / F      | soft   | 0,57      | 102 061  | 39,10 |
| M / F      | soft   | 0,60      | 102 066  | 45,60 |



TECHNICAL SPECIFICATIONS

|                   |  |
|-------------------|--|
| Connection        | G3 / 8" (DN10)                                       |
| Medium            | Fuel   |
| Ø tube            | 8 - 10 - 12 mm                                       |
| Sealing           | Joint torique  |
| Max. flow         | 500 L/h (100 L/h avec une cartouche obstruée à 80 %) |
| Scope of delivery | Cartouche nickelée + équerre de fixation             |

Spare parts for filters

| Weight kg                                       | Part no. | €    |
|---|----------|------|
| Nickel plated screen filter element             | 107 810  | 4,80 |
| Felt filter element                             | 107 809  | 4,00 |
| Bowl nut  | 107 811  | 3,90 |
| O - ring seal for bowl nut                      | 107 813  | 1,60 |
| Transparent bowl                                | 107 812  | 4,90 |
| Sachet of soft olives for universal connection  | 107 814  | 4,10 |
| Sachet of brass olives for universal connection | 107 815  | 8,80 |







SELF CLIMAT MORVAN  
Z.I. Sud - Rue des Epinettes  
CS 50152 TORCY  
77208 Marne-la-Vallée CEDEX 01  
FRANCE

Tél. : +33 (0)1 60 05 18 53

[export@selfclimat-morvan.com](mailto:export@selfclimat-morvan.com)

[www.selclimat.com](http://www.selclimat.com)

votre distributeur

